

# OCXO DIP20

深圳市源鑫圆科技有限公司  
SHENZHEN YUANKUNYUAN TECHNOLOGY CO., LTD.

## ●Part Number Guide

T-V-S-FF.FFFM-FS -OT -OP-TU-S

T(Type 型号): OC=20 OCXO

V(Input Voltage 输入电压): 3.3-3.3V 5=5.0V,etc

S(Symmetry 占空比): 5=45/55max 6=40/60 max

F(Frequency 标称频率)4.096,5,8.192,10,16.384,20

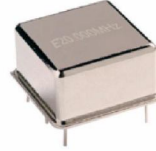
FS(Frequency Stability 频率稳定性): 0.05=±0.05ppm, etc

OT(Operating Temperature 工作温度):A=-20°C to +70°C B=-40°C to +75°C, etc

OP(Out put 输出):1=15PF TTL 2=50PF TTL 3=15PF CMOS 4=50PF CMOS

TU(Tube 摆管)

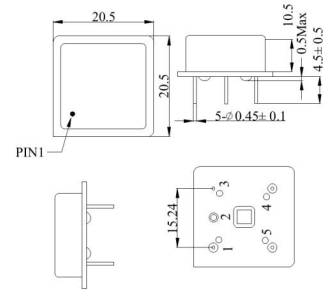
S(Special Requirement 特殊要求)



## ●Electrical Specifications 电气参数

型号	Holder Type	OC20
频率范围	Frequency Range	1.000MHz~100.000MHz
频率偏差	Initial Frequency Tolerance @25°C	±0.1ppm
频率稳定度	Frequency Stability	±0.05ppm
老化率	Aging 10 Year	±3.0ppm
输入电压	Input Voltage	5.0±10% V
输入电流	Input Current	20mA Max
占空比	Symmetry (Duty Cycle)	40 - 60
上升时间	Rise Time	9max nS
下降时间	Fall Time	8max nS
高电平	Logic "1" Level	2.4Min V
低电平	Logic "0" Level	0.4Max V
开始时间	Output Type	20Max ms
控制电压	Control Voltage	0.5 - 4.5 V
相位噪声	Phase Noise (Typical) dBc/Hz	<u>1Hz</u> -10Hz 100Hz 1KHz 10KHz -80 -120 -140 -145 -150

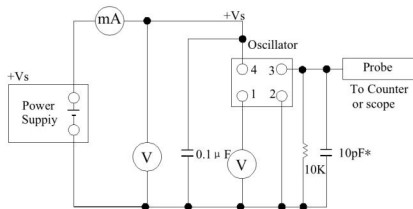
## ● Mechanical Dimensions 外型尺寸 UNIT(单位): mm (毫米)



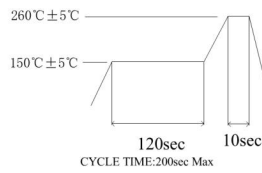
### Pin Connection

PIN	FUNCTION
1	电源
2	输出
3	接地
4	控制电压
5	参考电压/悬空

## ● Test Circuit(测试电路)



## ● Reflow Condition 回流焊条件



<http://www.yxycrystal.com>

电话: 0755-27579145 孙先生 13378429168 刘小姐 13714538709 传真: 0755-27576045