

●Part Number Guide

T-FF.FFFK-LC-FT-OT-ESR-TR-S

T(Type 型号): W=1×5 Tuning Fork

F(Frequency 标称频率):

LC(Load Capacitance 负载电容):12.5=12.5pf 00=series, etc

FT(Frequency Tolerance 调整频差):30=±30ppm, etc

OT(Operating Temperature 工作温度):1060=-10℃ to +60℃ 4085=-40℃ to +85℃, etc

ESR(Equivalent Series Resistance 等效阻抗)

TR(Tape and Reel 编带)

S(Special Requirement 特殊要求)

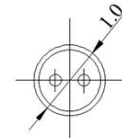
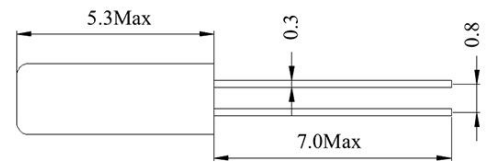


●Electrical Specifications 电气参数

型号	Holder Type	Turning Fork 308(KHz)
频率范围	Frequency Range	30.000KHz to 100.000KHz
调整频差	Frequency Tolerance (ΔF) (at25℃)	±10ppm to ±100ppm
频率温度系数	Parabolic curvature constant	[-0.035±0.01]ppm/℃ ²
工作温度范围	Operating Temperature Range	-10℃~+60℃ to -40℃~+85℃
储存温度范围	Storage Temperature Range	-40℃~+85℃
老化	Aging (25℃)	±5ppm/Year Maximum
静电容	Shunt Capacitance (C0)	1.75pF Typical
动电容	Motional Capacitance(C1)	3.5fF Typical
激励功率	Drive Level	1μW Typical
绝缘阻抗	Insulation Resistance (Rs)	500 Mega ohms Minimum at D.C100V
负载电容	Load Capacitance (CL)	Suggested by customer

• Mechanical Dimensions外型尺寸

UNIT(单位):mm(毫米)



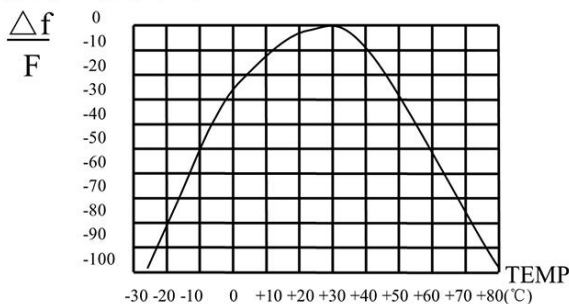
●Equivalent Series Resistance and Mode of Operation

等效阻抗和振荡模式

Frequency Range 频率范围	ESR (Ω) 等效阻抗
30.000-40.000 KHz	40K Max
40.000-100.000 KHz	30K Max

●Frequency vs. Temperature Curve

频率温度曲线



• Reflow Condition 回流焊条件

